

“Demanded by Those Who Know Quality”

FRONT-MOUNT PATROL WING

8MTWFM, 8NTWFM, 8TEWFM, 9MTWFM, 9NTWFM, 9TEWFM, 10MTWFM, 10NTWFM, 10TEWFM

STANDARD FEATURES:

Heavy duty construction using [8] 3/8" ribs, 10-gauge moldboard shell, and heavy structural tubing at the mount

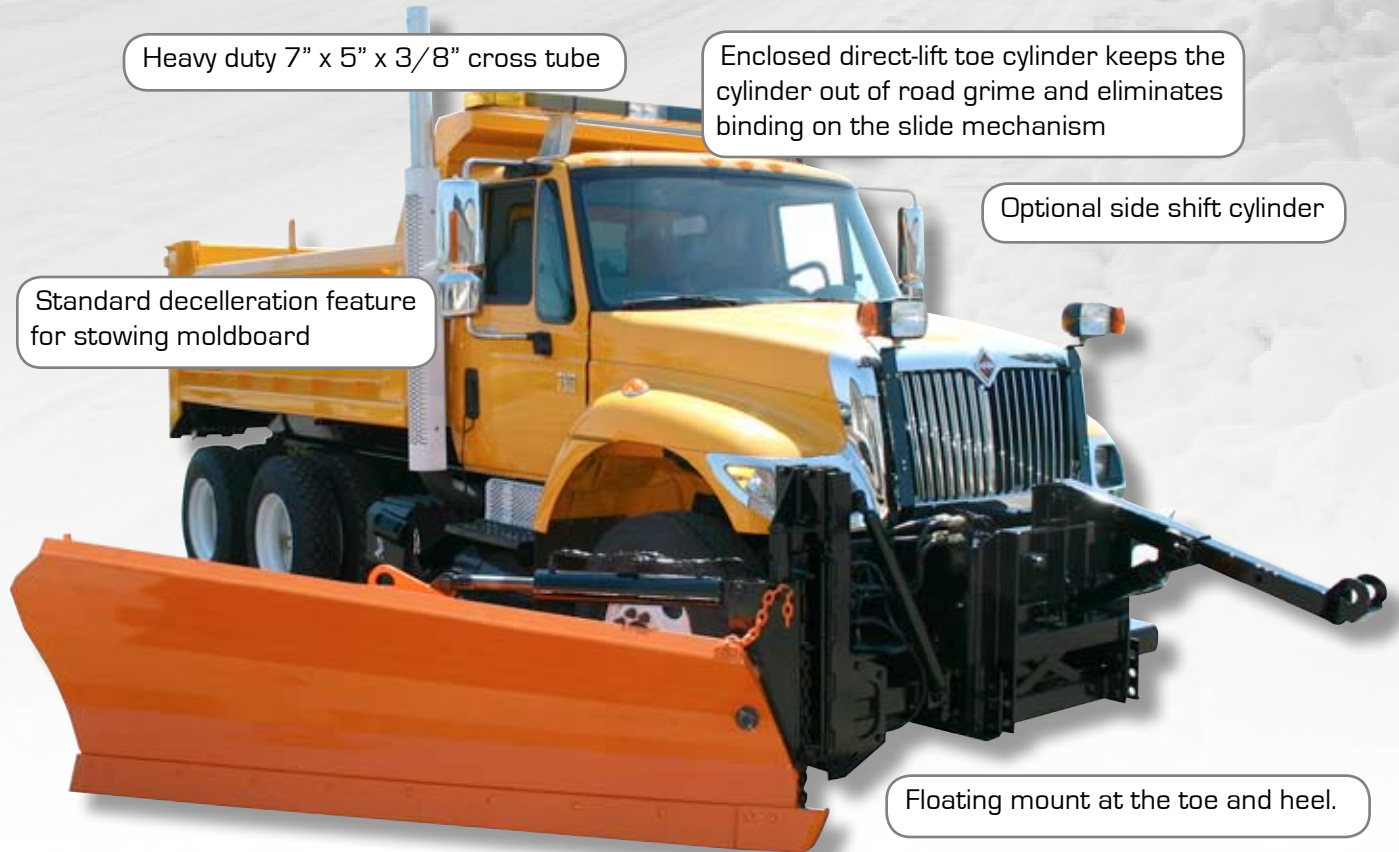
Heavy duty, independent non-binding float mechanism keeps the toe of the moldboard on the ground, where you want it.

Heavy duty 7" x 5" x 3/8" cross tube

Enclosed direct-lift toe cylinder keeps the cylinder out of road grime and eliminates binding on the slide mechanism

Optional side shift cylinder

Standard deceleration feature for stowing moldboard



Floating mount at the toe and heel.

Tapered Moldboard for more effective discharge.

Torsion trip cutting edge option uses [4] 7/8" diameter springs. Moldboard trip and rigid moldboard also available.

Optional Cushioned hydraulic buffer brace for lower stowing, allowing better visibility and the ability to angle the wing in and out while plowing.

Making our roads safe and clear is Bonnell's primary goal. When the snow is falling fast, you need the equipment that will help you remove the maximum amount of snow in less time. The Bonnell Front Mount Patrol Wing is specifically designed to enhance snow removal

effectiveness by expanding the total plowing width, thus minimizing the number of passes needed to clear the road. Now available in trip edge, moldboard trip, or non-trip, this versatile attachment will keep the truck on the road while moving the snow farther off the road.